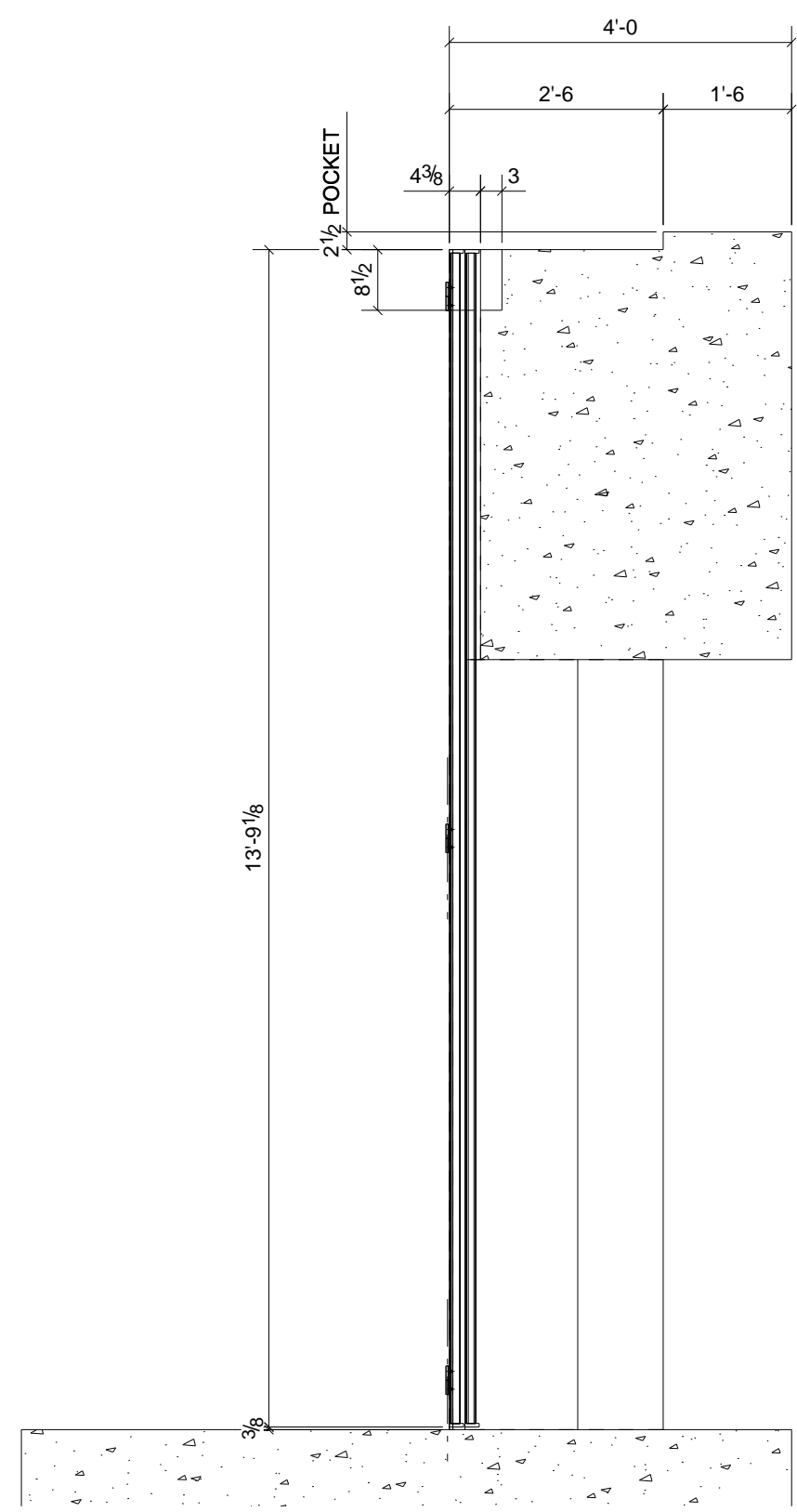
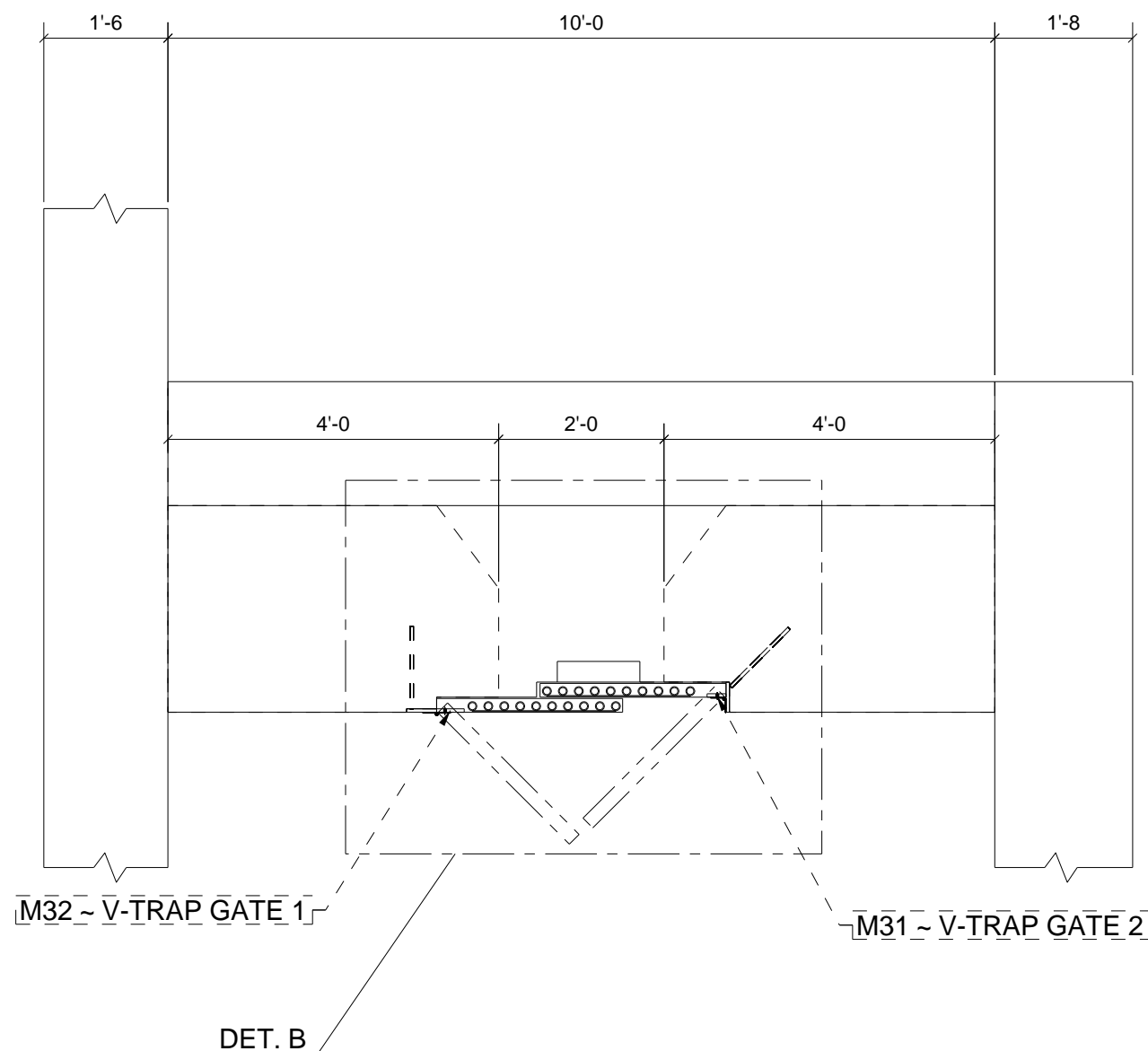


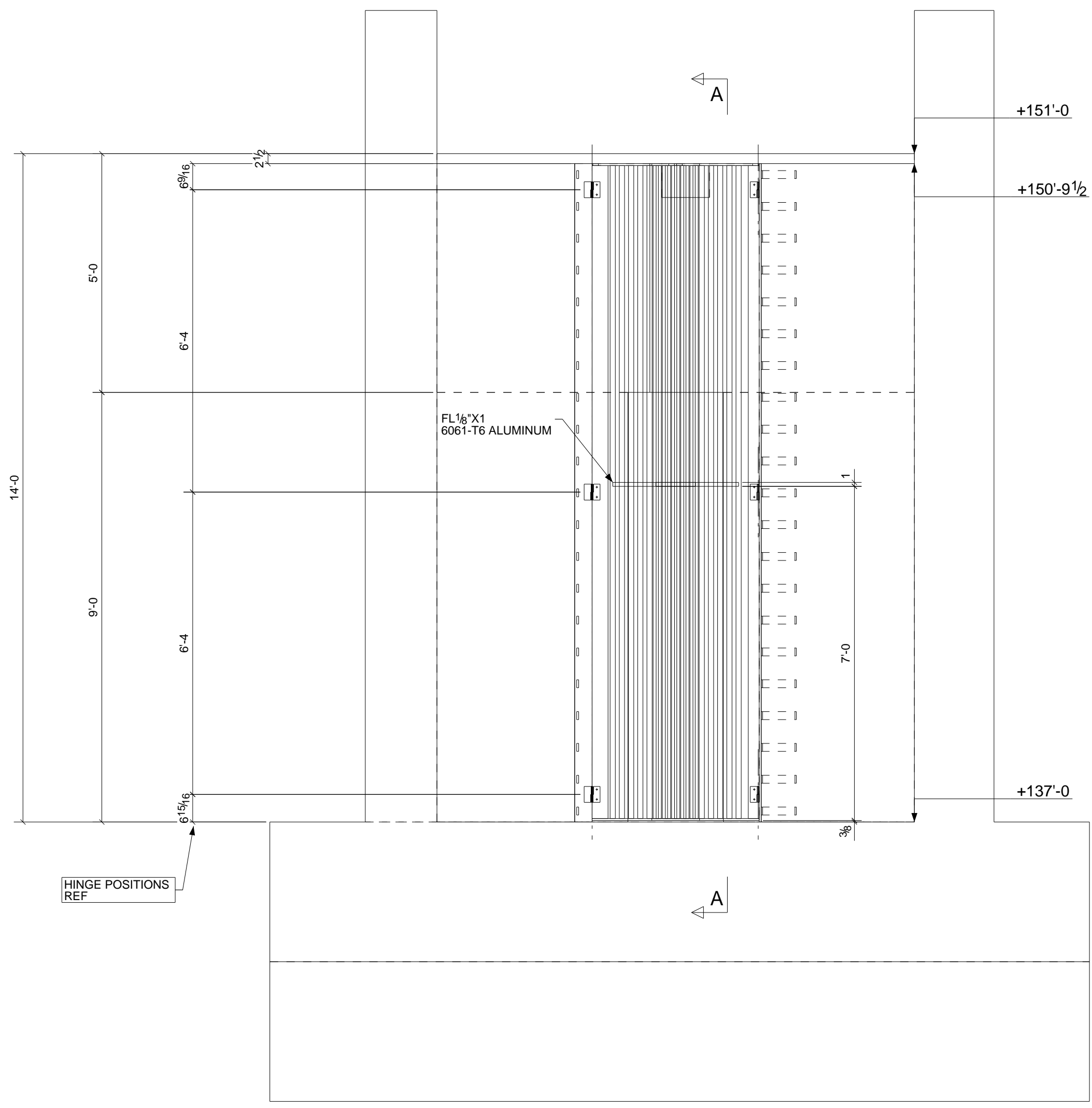
DETAIL B  
1:8



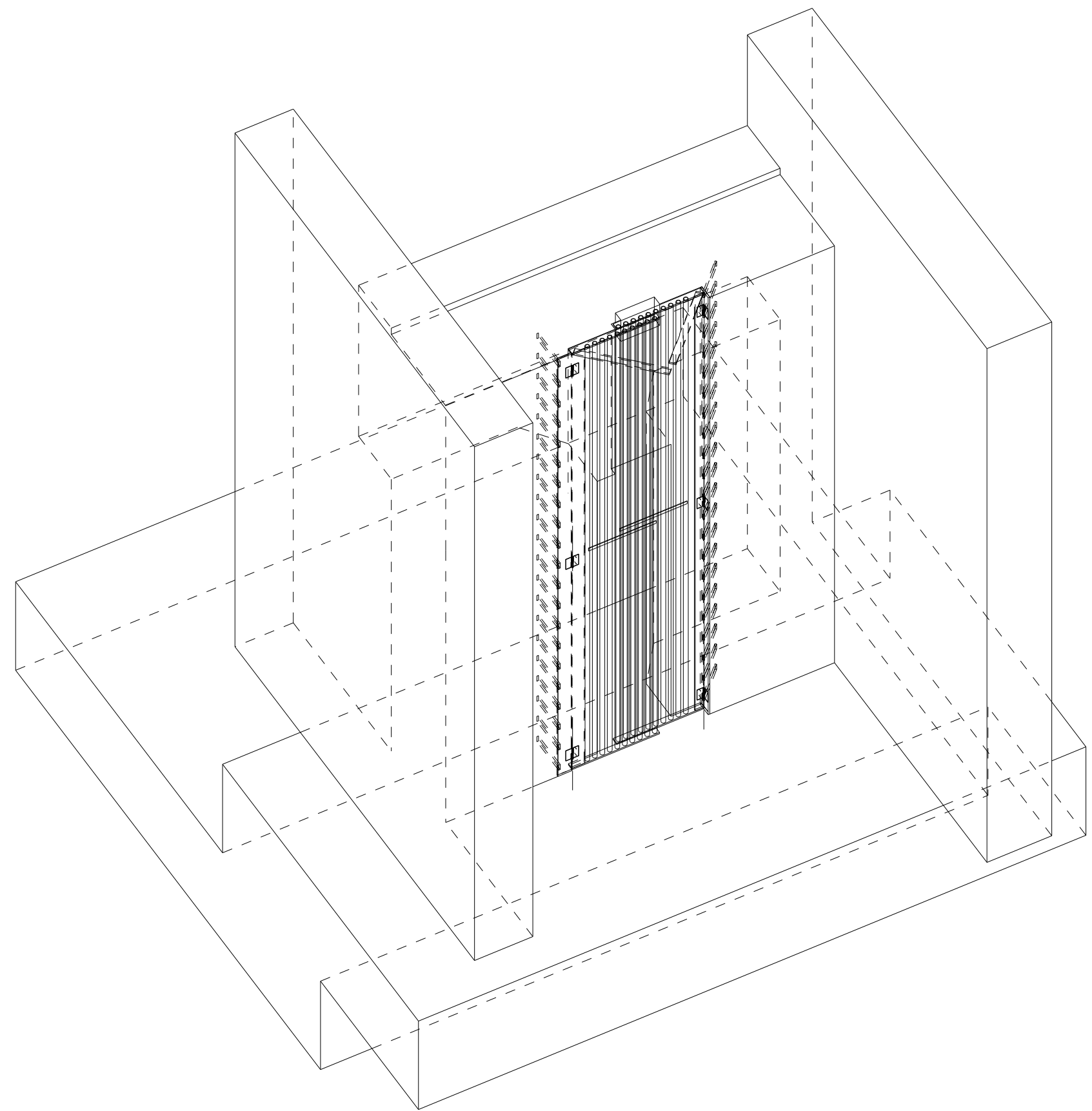
A-A  
1:24



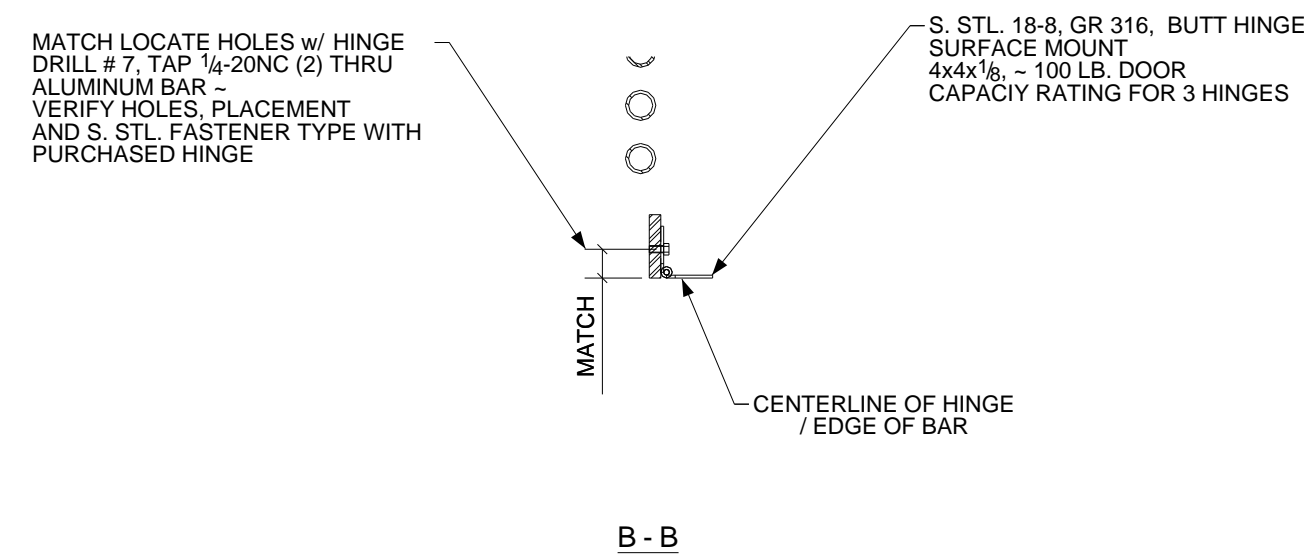
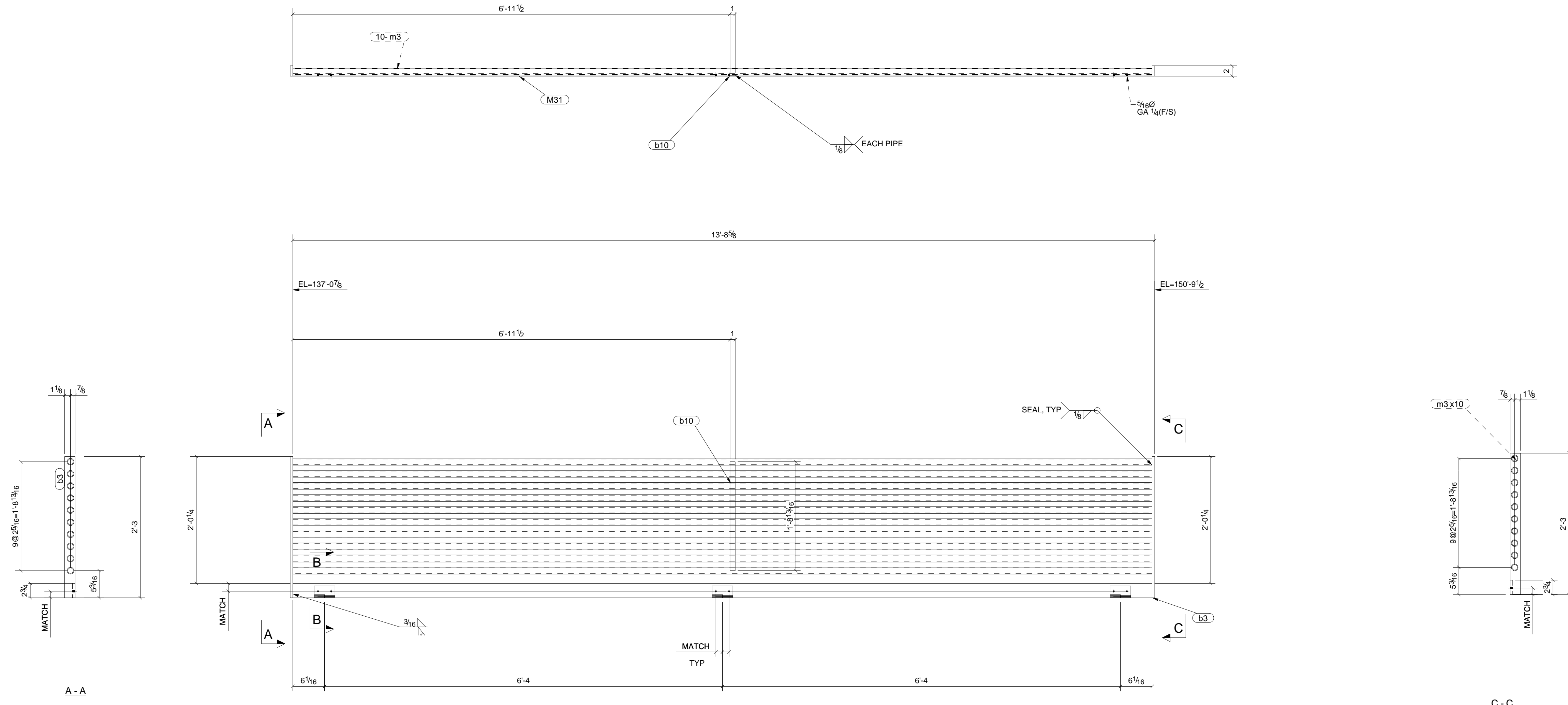
PLAN AT EL. +151  
1:24



V-TRAP ELEVATION / HOLDING TANK SIDE  
1:24



A	For Approval	10/03/10	TMc	MG
REV.	DESCRIPTION	DATE	DWN	CHK
<b>GENERAL NOTES</b>				
MATERIAL: A992/A36/A UN	ELECTRODES: E70xx LH	REF. DRG.	JOB USE	
HOLES: 13/16 DIA. UN	CONNS: 3/4" A325-N-ST	SHOP		
SURFACE PREP. AND PAINT:			APPROVAL	
PER SPECS				
PER SPECS				
DESCRIPTION: V-TRAP GATE INSTALLATION - REF DWG S1.23				
PROJ. NAME	Lyle Falls Fishway Improvements	DRAWN BY		
LOCATION	Yakima Nation, Toppenish Washington	DATE	11/04/2010	
CONTRACTOR	Williams Charles Wes ARCH./ENG. Harbor Consulting Engineers	CHKD. BY		
MARTINS MOBILE WELDING			DATE	
PO BOX 164			JOB No.	
STEVENSON, WA 98648			PK3	
(509) 281-0255			DRG. No. REV.	
			E3-1 A	

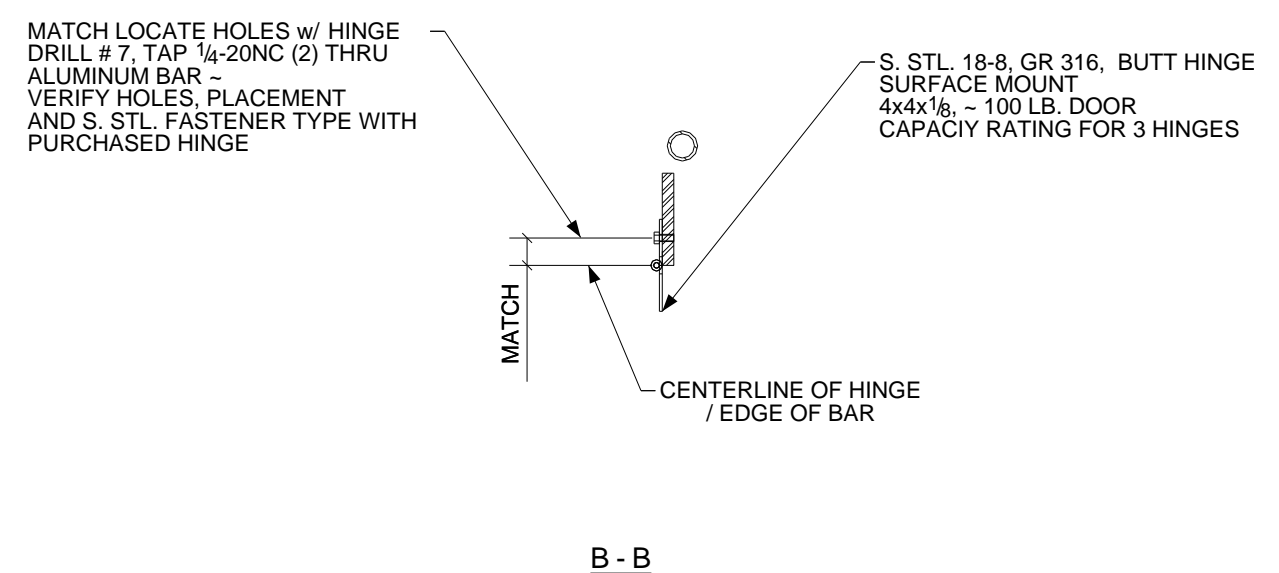
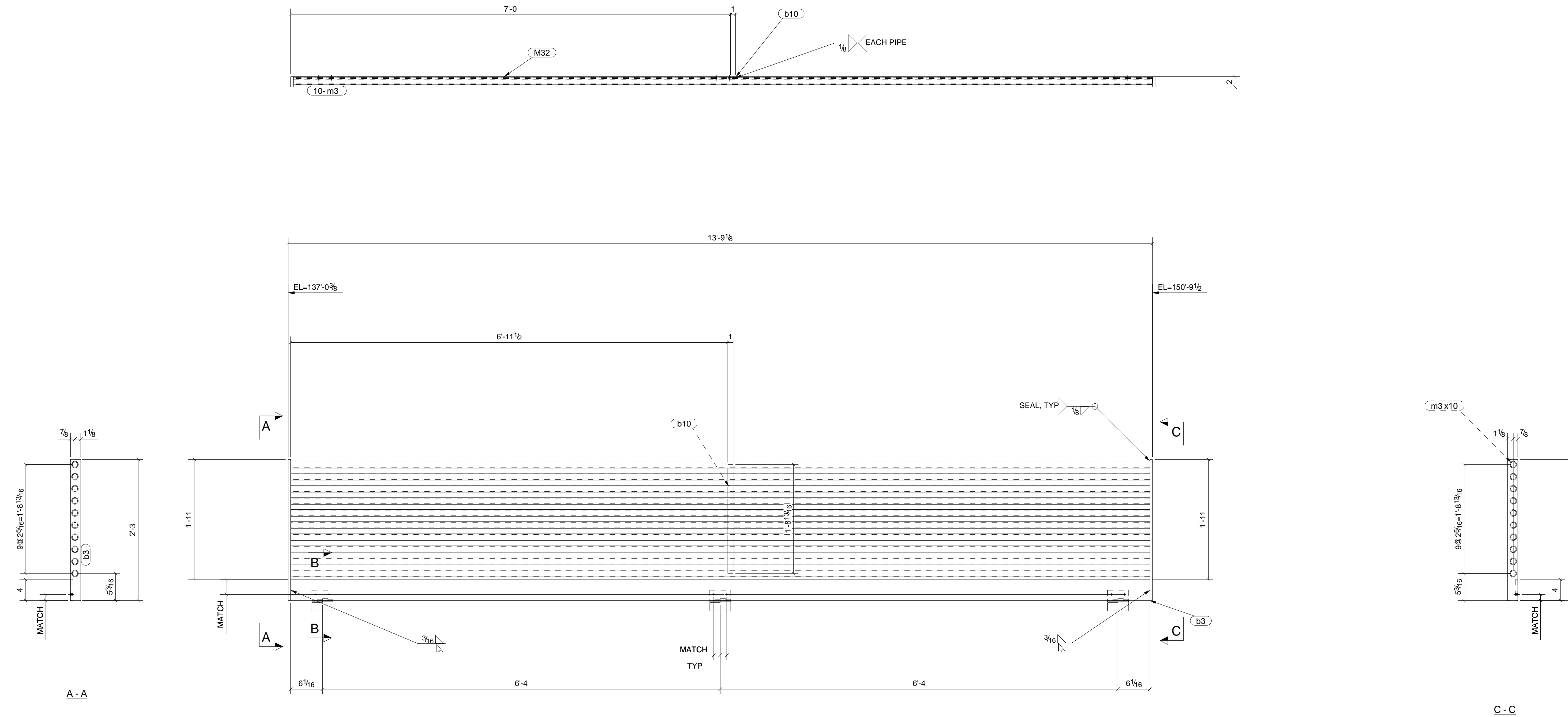


- STANDARD SHOP NOTES:
- 1) ALL MATL. AS NOTED
  - 2) HOLES 13/16" O U.N.
  - 3) 1" S.C. STD. SHOP PRIMER U.N.
  - 4) WELDING: E70XX OR E7XT-X OR WIRE AS REQ'D.; ALL WELDING MUST BE DONE IN ACCORDANCE WITH A.W.S. D1.1 D1.2, D1.2M
  - 5) 3/4" DIA A325 BOLTS U.N.
  - 6) FIELD VERIFY ALL DIMENSIONS & ELEVATIONS PRIOR TO FABRICATION, REF DWG. MS-1
  - 7) ALL ALUMINUM ASSEMBLIES TO BE CLEANED / FINISHED PER SPECS.

## ONE - V-TRAP GATE 2 - M31

BILL OF MATERIAL						
SHIP	MARK	NO PCS	DESCRIPTION	LENGTH	PIECE MARK	REMARKS
1	M31	1	FL1/2"X2 3/4"	13'-8 1/8"		SQ-2 6061-T6 ALUMINUM
		2	FL1/2"X2"	2'-3"	b3	6061-T6 ALUMINUM
		1	FL1/8"X1"	1'-8 13/16"	b10	6061-T6 ALUMINUM
		10	PIPE1STD	13'-8 1/8"	m3	6061-T6 ALUMINUM

A	For Approval	10/03/10	TMc	MG
REV.	DESCRIPTION	DATE	DWN	CHK
<b>GENERAL NOTES</b>				
MATERIAL: A992/A36/A		ELECTRODES: E70xx LH	REF. DRG.	
HOLES: 13/16" DIA. U.N		CONNS.: 3/4"Ø A325-N-ST		
SURFACE PREP: PER SPECS		APPROVAL		
AND PAINT: PER SPECS				
DESCRIPTION: V-TRAP GATE ASSEMBLY				
PROJECT NAME: Lyle Falls Fishway Improvements				
LOCATION: Yakima Nation, Toppenish Washington				
CONTRACTOR: Williams Charles West				
<b>MARTINS MOBILE WELDING</b>		DRAWN BY		DATE
PO BOX 164				11/04/2010
STEVENSON, WA 98648		CHKD. BY		DATE
(509) 281-0255				
JOB No.	DRG. No.	REV.		
PK3	M31	1		



STANDARD SHOP NOTES:  
 1) ALL MATL. AS NOTED  
 2) HOLES 1 3/16 O U.N.  
 3) 1 S/C STD. SHOP PRIMER U.N.  
 4) WELDING: E70XX OR E7XT-X OR WIRE AS REQD.; ALL WELDING MUST BE DONE IN ACCORDANCE WITH A.W.S. D1.1 D1.2, D1.24  
 ALL WELDS 3/16 FILLETS OR BUTT WELDS, UNLESS NOTED.  
 BREAK SHARP EDGES  
 5) 3/4\"/>

## ONE - V-TRAP GATE 1 - M32

BILL OF MATERIAL						
SHIP	MARK	NO PCS	DESCRIPTION	LENGTH	PIECE MARK	REMARKS
1	M32	1	FL1/2\"/>			

A	For Approval	10/03/10	TMc	MG
REV.	DESCRIPTION	DATE	DWN	CHK
<b>GENERAL NOTES</b>				JOB USE
MATERIAL: A992/A36/A		ELECTRODES: E70xx LH	REF. DRG.	
HOLES: 13/16 DIA. U.N		CONN'S.: 3/4\"/>		

**MARTINS MOBILE WELDING**  
 PO BOX 164  
 STEVENSON, WA 98648  
 (509) 281-0255

DRAWN BY TMc	DATE 11/04/2010
CHKD. BY MG	DATE 11/04/2010
JOB No. PK3	DRG. No. M32
	REV. 1